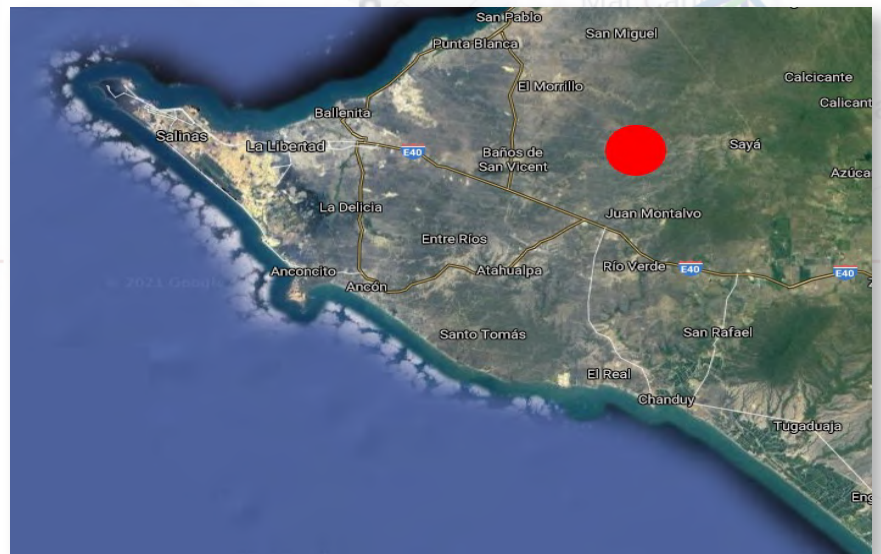


Mercury Site

Lat. 0°

The Equatorial Ground Station



Best Equatorial Option Available

After an extensive search for suitable land for ground station operations, The Ecuadorian Civilian Space Agency (EXA) and its partners identified the best option in the Province of Santa Elena - Ecuador. This province is mostly a tourist destination due to its beaches and weather, it has a low population density, and it does not have a high industrial development (no high RF pollution). As it is shown in the map below, Santa Elena is located at the Ecuadorian Pacific Coast. However, is not directly near the ocean preventing any environmental affectation related to coastal regions.

Our business model is the best suited for most of the companies around the world:

*We absorb the investment required for the construction of infrastructure. You **only** pay for rent, maintenance fees, services bills, and government fees.*

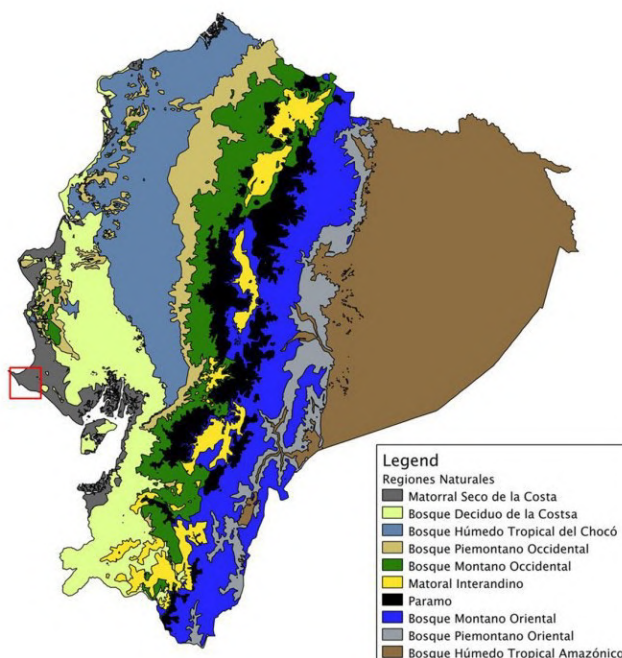
About Mercury

- 110 ha. dedicated to the construction and operation of multiple types of ground stations.
- Located in Ecuador: A peaceful and modern country in the middle of South America, open to business and friendly for new investments.
- The site's land was selected after rigorous technical studies, taking advantage of the equatorial location, with access to internet and energy at competitive costs. Rectangular in shape, the terrain has a length of 2 kilometers and a width of 500 meters.
- We have the support of the Ecuadorian Government, and we ensure the best conditions for our clients, Lower tariffs for radiofrequency spectrum use and tax discounts have been agreed upon for modern telecommunication standards (Ka-band).
- Ecuador has a long history of peace (no guerrilla and no terrorism), reliable provision of services. It is an open country to foreigners and has specific importation exemptions for ground station businesses.
- The Mercury Site is a joint venture between the Ecuadorian Civilian Space Agency, Audax International, and the Sideralis Foundation. We know about the space industry; we know about ground station businesses.

Weather, Terrain, Population, and Services Availability

Desert of Santa Elena:

- Dry land
- Low to moderate winds: 0 to 20km/h
- Flat, even land, clear view in 360°
- Access roads in prime shape
- Access to cheap electricity and water:
 - US\$ 0.08/KWh
 - US\$ 0.61/m³ of water
- Access to high speed internet
 - (near submarine cable)
- Far to moderate distance from population centers



Radio Frequency use in the Mercury Site

Radiofrequency use in the zone of interest is limited and does not represent a source of interference that could affect or interfere with the ground station operations. In fact, there is no use of the K-band in the zone.

Mercury Site

- Maximize your access time in an equatorial location.
- We invest in your infrastructure, you don't.
- Perfect environmental conditions, 24/7 operations.
- We help you with the fees, taxes, and importation matters.
- A peaceful country, with reliable services,
- Friendly to your long-term presence.
- Maximize your revenues and growth.



Partners



AUDAX

Contact Us

- 👤 Enrique Sarria
- ✉ cco@exa.ec
- ☎ +593 999 429 106

