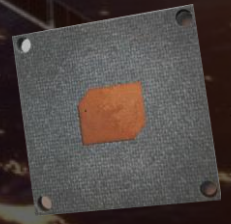


Improve your mission's payload data transmission with Celestial's high gain, X-band patch antenna specifically designed for CubeSat LEO missions



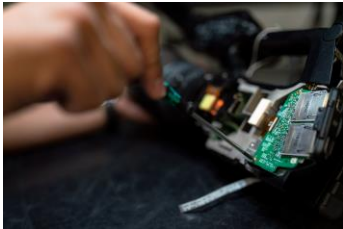
Availability

The design with existing performance characteristics is ready for production and delivery. Alternatively, we can tailor the design to your mission requirements.



Customization

To meet your specific requirements, Celestial is capable to customize the antenna performance and interfaces tailored to your CubeSat and mission.



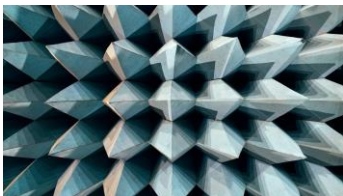
Integration

Celestial engineers will support you with the physical antenna integration. Based on your preference, the support will be on-site or remote, via teleconferencing.



Engineering

If requested, Celestial engineers will work with your engineers and verify your mission communication requirements.



Testing

Antenna development and testing satisfies the requirements laid in "ECSS-Q-70-71A rev.1", "ECSS-Q-ST-70-31C", "ECSS-Q-ST-70-60C" and "ESA-ECSS-10-04"

Performance

Gain: 7 to 8 dBi
Freq.: 7 to 8.5 GHz
Size: 34 x 34 mm
Polar.: CP
Mass: < 40 g
Broad view angle
TRL: 8

Applications

Small Satellites
GPS
Mobility

Heritage

IGLUNA 2020 – Analog mission demo

REVELA 3U CubeSat LEO mission (for components and material)

Contact our engineers directly at any time for a free custom solution assessment:



Celestial Space Technologies GmbH
celestialspacetechnologies.com



Mayank
mayank@celestialspacetechnologies.com
+49 152 2 68 16 08 1