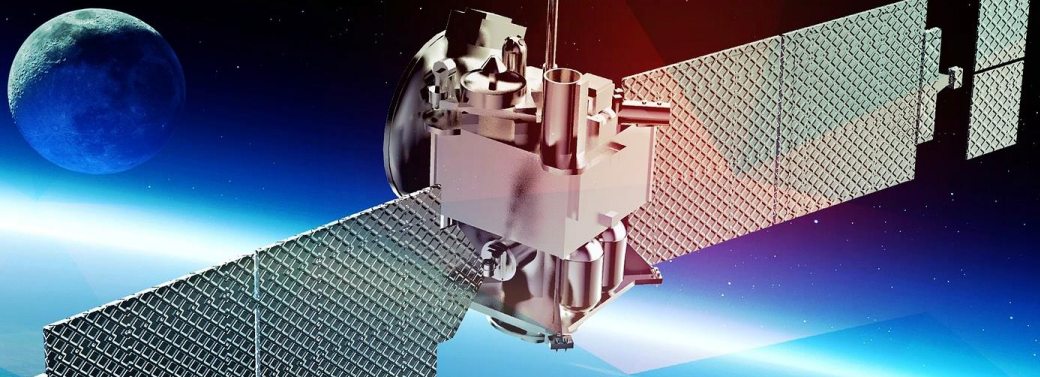




CELESTIAL  
Deep Space Communications



Improve the link connection of your mission with Celestial's high gain, S-band patch antenna specifically designed for CubeSat LEO missions



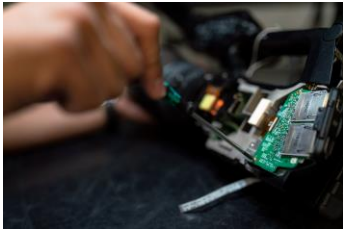
### Availability

The Celestial antenna standard model can be fitted to your mission with only minor adjustments.



### Customization

To meet your specific requirements, Celestial will customize the antenna performance and interfaces tailored to your CubeSat and mission.



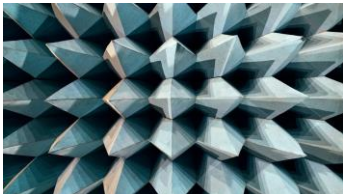
### Integration

Celestial engineers will support you with the physical antenna integration. Based on your preference, the support will be on-site or remote, via teleconferencing.



### Engineering

If requested, Celestial engineers will work with your engineers and verify your mission communication requirements.



### Testing

Antenna development and testing satisfies the requirements laid in "ECSS-Q-70-71A rev.1", "ECSS-Q-ST-70-31C", "ECSS-Q-ST-70-60C" and "ESA-ECSS-10-04"

### Performance

- Gain: 6 to 8 dBi
- Freq.: S-band
- Size: 1U
- Polar.: CP
- Mass: <100g
- Low-cost system
- TRL-9

### Applications

- Small Satellites
- GPS
- Mobility

### Heritage

- IGLUNA 2020 – Analog mission demo
- REVELA 3U CubeSat LEO mission

Contact our engineers directly at any time for a free custom solution assessment:



Celestial Space Technologies GmbH  
celestialspacetechnologies.com



Mayank  
mayank@celestialspacetechnologies.com  
+49 152 2 68 16 08 1